

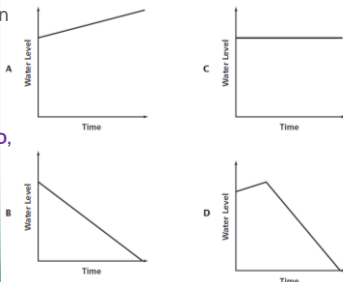
Created by Mr. Lischwe

Warmup 9/ $\left(\frac{7+7+7+7+7+7+7}{7}\right)$

1) Which graph matches this situation? "A pool, originally filled with water, was slowly drained of water until it was empty."

2) Make up your own situation to match each of the three situations that were not correct for #1.

3) GET A WHITEBOARD, MARKER, & ERASER. PUT IT INSIDE YOUR DESK TO SAVE FOR LATER!!!



Picture Retakes...

- If you want a retake, bring back the picture packet to room 201 along with a parent note requesting a retake by September 19.

Tests...

- I have graded the FRONT of everyone's test.
- I will hopefully have them done by tomorrow.

Adding up 1-200

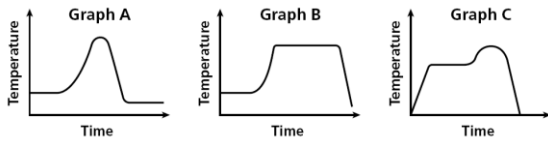
NEW UNIT: Functions

- Inputs and outputs
- Tables, graphs, equations

Whiteboards!

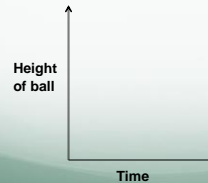
C

The air temperature increased steadily for several hours and then remained constant. At the end of the day, the temperature increased slightly before dropping sharply. Choose the graph that best represents this situation.



Draw a graph:

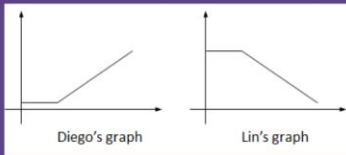
- You throw a ball straight up in the air. It comes back down, but gets stuck in a tree before it hits the ground.



Here are five pictures of a dog taken at equal intervals of time.

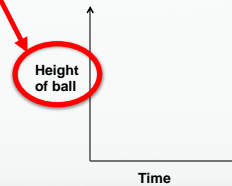


Diego and Lin drew different graphs to represent this situation:



Both Diego and Lin used "time" as the independent variable (x-axis). Discuss with your group: what do you think they each used for the dependent variable? (y-axis)

ALWAYS LOOK HERE FIRST!!!!
THE INDEPENDENT VARIABLE TELLS YOU
WHAT THE GRAPH IS MEASURING!!!!

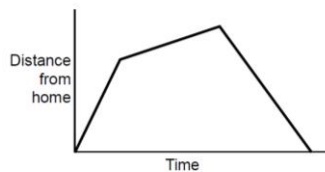


Matching a Graph to a Story

A. Tom took his dog for a walk to the park. He set off slowly and then increased his pace. At the park Tom turned around and walked slowly back home.

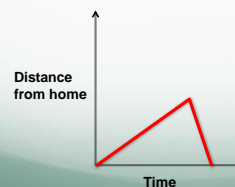
B. Tom rode his bike east from his home up a steep hill. After a while the slope eased off. At the top he raced down the other side.

C. Tom went for a jog. At the end of his road he bumped into a friend and his pace slowed. When Tom left his friend he walked quickly back home.

**C**

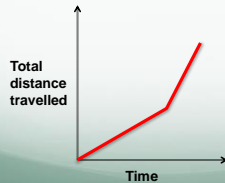
Draw a graph:

- You leave home, walking at a slow constant rate. After a few blocks, you see a scary lion. You turn around and run straight home.



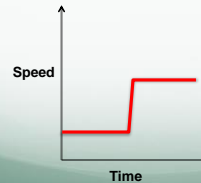
Draw a graph:

- You leave home, walking at a slow constant rate. After a few blocks, you see a scary lion. You turn around and run straight home.



Draw a graph:

- You leave home, walking at a slow constant rate. After a few blocks, you see a scary lion. You turn around and run straight home.



Matching in Groups

- Match the stories to the graphs!!!
- Call me over when you think they're right.

HOMEWORK

- Unit 1 Extension Worksheet
 - These may be more of a challenge...but my job is to challenge you!!!