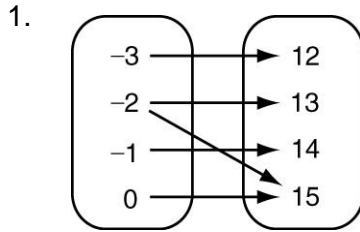


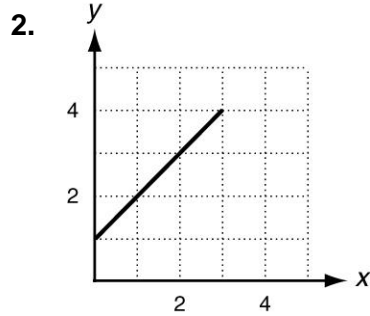
Functions Basics Review Worksheet

Tell whether the relation is a function. Explain.



Function? _____

Explain: _____



Function? _____

Explain: _____

3.

x	y
8	8
6	6
4	4
2	6
0	8

Function? _____

Explain: _____

For #4-9, use the following formulas

$$f(x) = 7 - 3x$$

$$h(x) = 2(x - 1)^2$$

$$g(x) = \frac{x-3}{-2} + 3$$

4. $h(4)$

5. $f(-5)$

6. $h(-4)$

7. $g(7)$

8. $g(-1)$

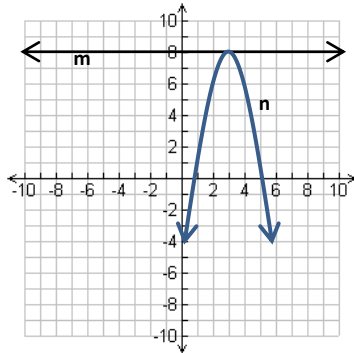
9. $f(6)$

For 10 and 11, write a function for the situation. Identify the independent and dependent variables.

10. An ice rink charges \$3.50 for skates and \$1.25 per hour.

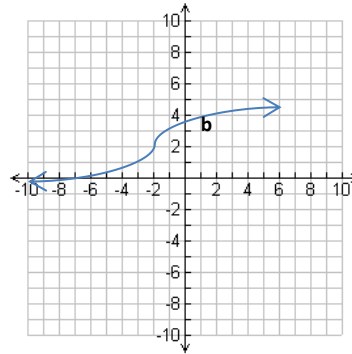
11. Terry has 30 pieces of gum and gives 2 pieces to each of his friends.

12.



Which is greater
m(3) or n(3)?

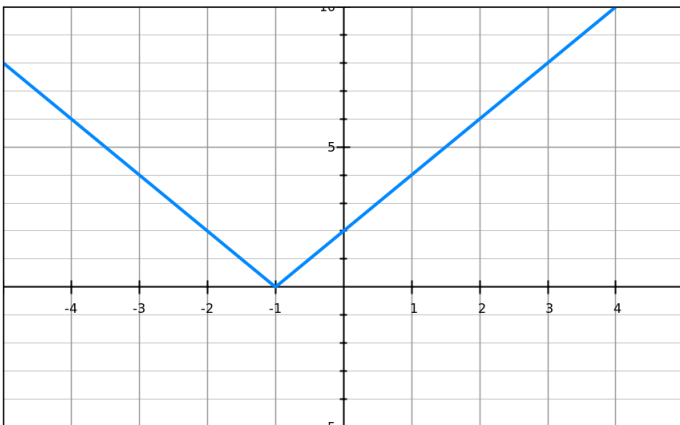
13.



Which is greater
b(-2) or c(-2)?

$$c(x) = -\frac{x}{2} - 4$$

Use the graph below to answer #14-16

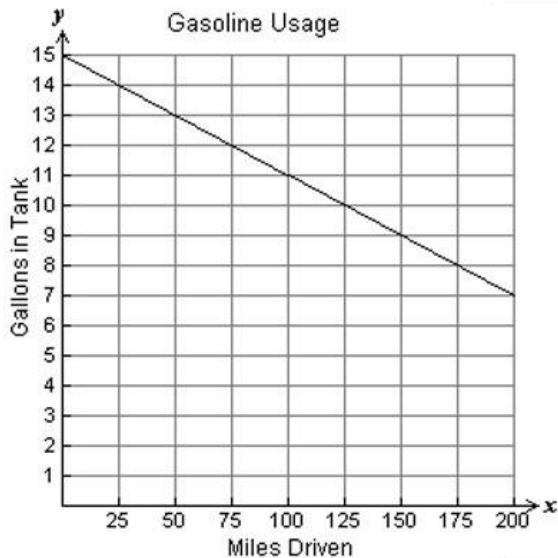


14. What does it mean if I ask: **Find f(3)?**

15. **Using the graph**, find $f(3)$ and write the value below.

16. **Using the graph**, find x when $f(x)=2$.

17.



Find $f(125)$

What does it mean in this situation?